



www.pgmusic.com

© PG Music Inc.

Phone: 250-475-2874 or 1-888-PGMUSIC

Fax: 250-475-2937 or 1-877-475-1444

Email: sales@pgmusic.com

Email: support@pgmusic.com

Welcome to the Band-in-a-Box® Soloist

An exciting aspect of the Soloist feature in Band-in-a-Box is that the program is able to increase its musical intelligence by analyzing new solos that it is exposed to. It "learns by ear"- and it constantly gets better and better!

The Soloist Sets included in this package extend and improve the already-professional quality improvising ability that is built-in to Band-in-a-Box. With these add-ons, your Band-in-a-Box will be enhanced to a powerful new level of complete realism in all genres of music!

Installation:

Note: since this installation changes some program files, close down all programs (e.g., Band-in-a-Box) before installing.

Installing the Soloist Sets in Windows® 9x:

Insert the Band-in-a-Box Soloist Set CD-ROM into the CD-ROM Drive. The contents of your CD-ROM should display on your screen.

If the contents of the CD-ROM window fails to appear, double click on the **My Computer** icon located on your desktop and then select the appropriate drive icon to display your CD-ROM's contents.

1. Double-click on the **SETUP.EXE** program found in the root or main folder of the CD-ROM. Follow the on-screen instructions which will guide you through the rest of the installation process.
2. This will copy all of the Soloist files to your Band-in-a-Box directory/folder (usually C:\BB) and the Soloist Demo Files into a separate subdirectory/folder (e.g., C:\BB\SOL2JAZZ).

Installing the Soloist Sets in Windows® XP:

1. Insert the Band-in-a-Box Soloist Set CD-ROM into the CD-ROM Drive. The contents of your CD-ROM should display on your screen.
2. Double-click on the **SETUP.EXE** program found in the root or main folder of the CD-ROM. Follow the on-screen instructions which will guide you through the rest of the installation process.
3. This will copy all of the Soloist files to your Band-in-a-Box directory/folder (usually C:\BB) and the Soloist Demo Files into a separate subdirectory/folder (e.g., C:\BB\SOL2JAZZ).

Solo "like a pro" in hundreds of styles!

Band-in-a-Box includes Soloist Set #1 with a large variety of Soloists in many styles, and we are continually adding new ones. These specialty add-on Soloists are available for purchase separately. Visit our web site at www.pgmusic.com for news about the latest additions.

Soloist Set 2 – Killer Jazz (Swing)

Soloist Set 3 – Specialty Jazz

Soloist Set 4 – Rock

Soloist Set 5 – Bluegrass (includes fakebook)

Soloist Set 6 – Killer Pop & Older Jazz

Soloist Set 7 – Blues, Pop, Funk, Classical & More

Soloist Set 8 – Killer Jazz Waltz, Old Waltz, Jazz Fusion

Soloist Set 9 – Blues Guitar, Country Piano, Pop

Soloist Set 10 – Ballads & Guitar

Soloist Set 11 - Trumpet

Soloist Set 12 – Andy Laverne Mainstream Jazz

Soloist Set 13 – Andy Laverne Pentatonics

Soloist Set 14 – Jeff Lorber Fusion

Soloist Set 15 – Jeff Lorber Screamin' Rock

Soloist Set 16 – Saxophone (Older Swing & Modern)

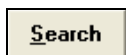
Soloist Set 17 - Trombone (Older Swing & Modern)

Automatic Solo Generation – “The Soloist”



To select a pre-made Soloist, click on the **[Soloist]** button on the toolbar, or press **Shift+F4**, or choose *Soloist | Generate and Play a Solo*. The **Select Soloist** window opens.

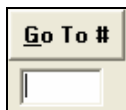
Pick a type of Soloist in the “Soloist type” list box and choose the appropriate style, or enable the “Auto” checkbox and press the **[Suggest]** button next to it. This brings up a list of Soloists in that style; simply choose which one you like.



If you can’t find the Soloist you’re looking for, try pressing the **[Search]** button to type in part of a name to search for.

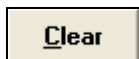


The **[Fav]** button finds your favorites by opening a list of the last 50 Soloists used.

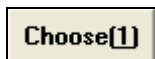


Go To# box allows you to select from the list exactly which Soloist to choose (if known).

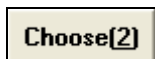
The pre-made Soloists may set the style, instrument, and harmony, but you can change these settings to your own choices.



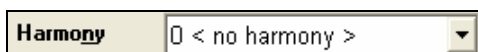
The **[Clear]** buttons will remove the currently selected Instrument, Harmony, or Style.



Use the **[Choose(1)]** button to select an instrument and automatically set the soloist note range for that instrument.



Use the **[Choose(2)]** button to select any style from the \bb folder.



For a harmonized solo, choose a harmony from the Harmony list.

Solo Mode



In **Normal** mode, Band-in-a-Box solos in the normal way of improvising choruses of the song.

Fills%

Fill instructs the Soloist to “noodle” on the song part of the time (% box).

Around Melody

To solo around the Melody, do the following:

- Open up a song that has a Melody, preferably a sparse Melody with some space in it that a Soloist might be able to “jump in.”
- Press the [Soloist] button. Select the Solo Mode “Around Melody.”
- Set the Soloist to play in All Choruses, and uncheck the “Mute Melody in Middle” option.
- Press [OK] and the Solo will be generated, playing riffs at times when the Melody isn't playing.

Trading 4s

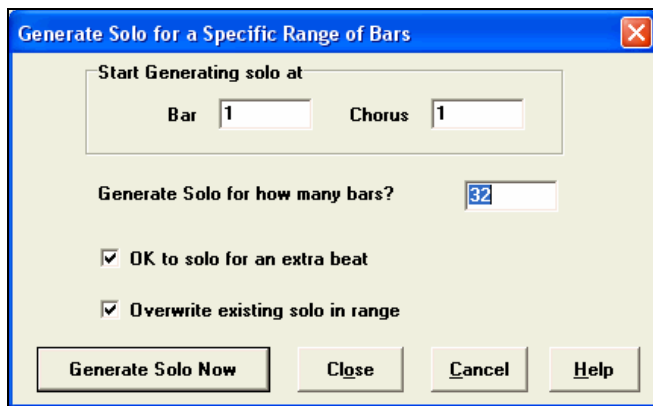
There is a type of soloing called “Trade4s” soloing. “Trading fours” refers to a solo lasting four bars, usually followed by a different melodic solo or drum solo for the next four bars. Band-in-a-Box can generate the first four or the second four bars.

Soloist Wizard

This option enables the “Soloist Wizard.” As you play notes on either a MIDI keyboard connected to the computer or on the QWERTY keyboard, the program will play “correct” notes so that you play a “perfect” solo every time!

Custom Solo Generation

The [Custom] button launches the **Generate Solo for a Specific Range of Bars** dialog. This allows you to set the range for the solo.



In real life, a Soloist tends to play a couple of extra notes after the solo section ends. Setting “OK to solo for an extra beat” allows the Band-in-a-Box soloist to behave in the same way.

If you want to overdub a solo and you have multiple solo tracks going at once, de-select “Overwrite existing solo in range.”

Once you press the [Generate Solo Now] button, the portion of the solo that you have selected will be (re)generated. The song will automatically start playing 2 bars before the new part, so you can quickly hear the new solo.

Tip: You can have these values preset to the values you'd like by first selecting/highlighting the range of bars that you'd like from the Chordsheet screen, then clicking on the Soloist button.

There are additional buttons and checkboxes to further define the Soloist.

Double Time? Checkbox

Set to “true” if you want a double-time solo; 16th notes instead of 8ths.

Solo Which Choruses?

Select which choruses you would like the Soloist to solo over. Choose from first, middle, last, any combination, or all three choruses. Press the [All Solo] button to have the Soloist play over everything. Press the [Melody & Solo] button to have the Melody play the first chorus, then have the Soloist come in on the second chorus, then have the Melody “play the tune out” on the last chorus.

Auto-Suggest

If the “Auto-Suggest” checkbox in the Select Soloist Dialog is on, you will find that an appropriate soloist is already selected for you. If you would like a different soloist, press the [Suggest] button and Band-in-a-Box will suggest another appropriate choice.

Load/Save settings w/song

These settings allow the saving and loading of Soloist settings. Enable these checkboxes if you wish to load and save these settings with a song.

Force to # of Choruses

Allows you to set a song to a definable number of choruses (e.g. 5) so that there are enough choruses for everyone to take a turn Soloing. This box allows you to quickly decide how many choruses you would like Band-in-a-Box to generate without having to open the *User | Force song to # choruses* menu item. The default is 5.



The Soloist Maker [Edit] button launches the **Soloist Editor** module where you can make your own or modify an existing Soloist. This feature allows you to define your own Soloists.

Soloist Editor

Num: 2 Bebop Piano Title: Bebop Piano

Memo: Basic bebop Piano solo, will work with most swing styles. Check 'Double Time ?' if tempo is slower

Soloist is: Swing 8th notes

Phrase Length: 4 to 20 beats

Choose ST2 Database

ST2 Style: J_SWING.ST2 *ST2 Default

_ST2 is: Swing 8th notes

Patch Change: Acoustic Piano

Note Range: 60 to 95 Choose

Harmony: 0 < no harmony >

Change Instrument: None Set ..

Change Style to ..

.STY is: Swing 8th notes

Ins.Space Between Phrases-How often?: 20 %

Space Length: 0 to 4 beats

'Outside' range: 1 to 7 1=in,9=out

Legato Boost %: 0 %

Increase lateness by (/120ppq): 0

Increase 8th note spacing by (120ppq): 0

Increase Velocity by (-127..+127): 0

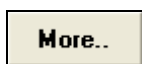
Maximum notes in 1 beat (default=255): 255

SubSoloists: ☒ A ☒ B ☒ C ☒ D

Export Import Save As Copy Paste OK Cancel Help

Maximum notes in 1 beat (default=255) 255

You can control how many notes per beat that the Soloist will use. If you set a “Rock Guitar” Soloist to use nothing shorter than 16th notes it produces less 32nd note “guitar hero” solos.



This button launches the **More Soloist & Melodist Settings** dialog.

More Soloist & Melodist Settings

☐ Use MIDI Volume for Soloing Wizard

☒ Trigger Solo Playback Early

☒ Soloist - Prefer Long Phrases

Soloist Velocity Adjust: 5

Melodist Velocity Adjust: 5

OK Cancel Help

This dialog can also be accessed from the *Opt. | Preferences* [Soloist] button.

Set “**Use MIDI Volume for Soloing Wizard**” to true if you want MIDI velocity information sent to the Soloing Wizard. If you have a velocity sensitive MIDI device attached to your computer and you want to control the dynamics of the Soloist, you should enable this feature.

Set the “**Trigger Playback Early**” to true to enable song playback to start before the Soloist has actually completed composing a solo. Otherwise, Band-in-a-Box will completely compose a solo before song playback begins.

Soloist – Prefer Long Phrases

Set this checkbox to “True” (enabled) if you would like the Soloist to use the longest musical phrases it “knows.”

Soloist/Melody Velocity Adjust

This box allows you to quickly boost or reduce the volume of the Soloist part relative to the other instrument parts. For a realistic mix the soloist instrument is set slightly louder than the other instruments/parts in a song. The default is 5.

Have fun!